



# SMIJ

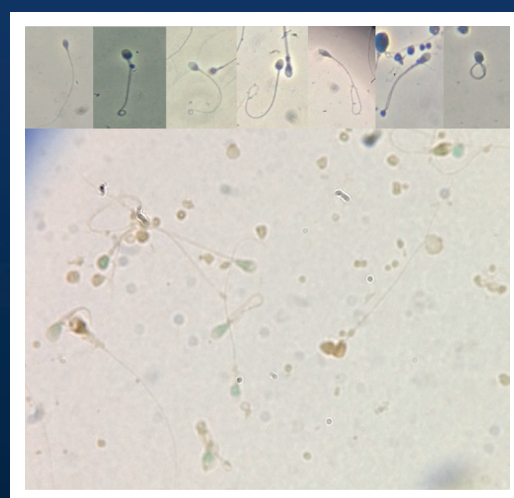
## Siriraj Medical Journal

### ORIGINAL ARTICLE

- 1 **The Effect of Kao-Ta (9-Square Step Exercise) and Kao-Ten (9-Square Dance Exercise) on Balance Rehabilitation in Patients with Balance Disorders**  
*Suvajana Atipas, et al.*
- 8 **Correlation between Hypo-osmotic Swelling Test and DNA Fragmentation Assessed by the TUNEL Assay in Asthenozoospermia**  
*Pitak Laokirkkiat, et al.*
- 14 **Lipid-Poor Adrenal Lesion: Differentiation of Benign from Malignant Disease by Using Imaging Features on Routine Contrast-Enhanced CT**  
*Shanigarn Thiravit, et al.*
- 21 **Normative Values of Second-Trimester Maternal Serum Markers Using an Automated Assay Platform for Down Syndrome Screening**  
*Kusol Russameecharoen, et al.*
- 25 **Economic Evaluation of Ready-to-use Injectable Medications by Pharmacy Department Compared with the Traditional System of Individual Preparation by Nurse**  
*Prapaporn Noparatayaporn, et al.*
- 31 **Administration of Renin-Angiotensin System Inhibitor Affects Tumor Recurrence and Progression in Non-Muscle Invasive Bladder Cancer Patients**  
*Saran Maneesuwansin, et al.*
- 38 **Cancer Pain Management: Is It Still Problematic?**  
*Pramote Euasobhon, et al.*
- 44 **Patient Interviews Improve Empathy Levels of Preclinical Medical Students**  
*Sapol Thepwiwatjit, et al.*
- 52 **Effect of Intraoperative Hypothermia on Surgical Outcomes after Colorectal Surgery within an Enhanced Recovery after Surgery Pathway**  
*Varut Lohsiriwat, Panumat Jaturanon*
- 59 **A Randomized Controlled Trial of the Correlation between Iodine Supplement in Pregnancy and Maternal Urine Iodine and Neonatal Thyroid Stimulating Hormone Levels**  
*Saifon Chawanpaiboon, Vittaya Titapant*
- 66 **The Implementation of a Red Blood Cell Transfusion Guideline in Critically III Surgical Patients at Siriraj Hospital**  
*Anticha Siritongtaworn, et al.*
- 74 **Prevalence of and Factors Associated with Inappropriate Indications for Transthoracic Echocardiography in Adult Outpatients at Siriraj Hospital**  
*Kesaree Punlee, et al.*
- 80 **Esophageal Replacement in Children: A 10-Year, Single-Center Experience**  
*Mongkol Laohapensang, et al.*

### REVIEW ARTICLE

- 89 **Extracellular Vesicles in Malaria Infection**  
*Ladawan Khowawisetsut, et al.*



By Pitak Laokirkkiat, et al.

Indexed by



Thai Association for Gastrointestinal Endoscopy



International Association of Surgeons Gastroenterologists & Oncologists Thailand Chapter

[www.smj.si.mahidol.ac.th](http://www.smj.si.mahidol.ac.th)

E-mail: [sjournal@mahidol.ac.th](mailto:sjournal@mahidol.ac.th)

